

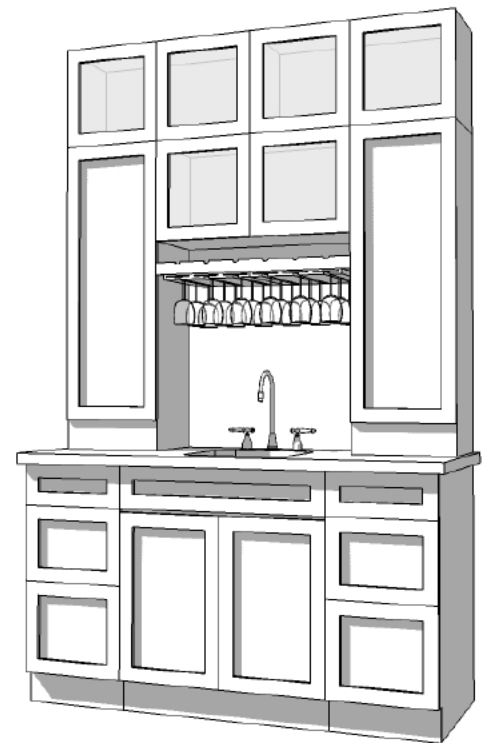
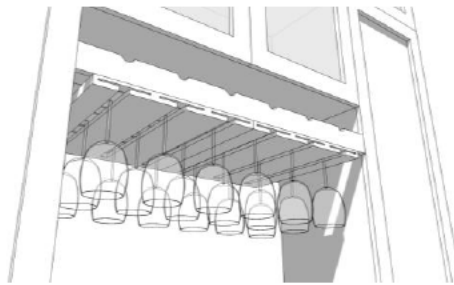
WINE BAR WITH STEMWARE & WINE BOTTLE RACK

For the family that likes to entertain and enjoys wine, this wine bar incorporates everything you will need. While the design shows a small sink, you could also put a wine cooler in the bottom to help keep your white wines chilled. This design also shows a creative way to make additional space above the sink by utilizing multiple small cabinets. You can use your imagination as to how you want to create this, but here is a simple way to create it using our cabinets. Note: In the picture they show glass doors on the top cabinets... we do not have mullion doors for the smaller cabinets, but you can always create them by routing out the center panel on the back of the door.



Supplies You Will Need from the RTA Cabinet Store

- ✓ Two 15" wide drawer base cabinets
- ✓ One 30" sink base cabinet
- ✓ Two 15" wide x 42" high wall cabinets
- ✓ Three 30" wide x 15" high wall cabinets
- ✓ One stem glass holder
- ✓ One wine bottle rack (unfinished)
- ✓ One pint of stain
- ✓ One straight valance
- ✓ Two base end panels
- ✓ One 30" wall end panel
- ✓ One 8' piece of toe kick
- ✓ One piece of crown molding (optional)
- ✓ One piece of 2 x 4 lumber
- ✓ One piece of 1 x 2 lumber



Instructions to Build a Wine Bar with Stemware & Wine Bottle Rack

Step 1: Install the base cabinets as usual.

Step 2: Install countertop.

Step 3: Using the 2 x 4, build two frames that are 14 ¾" x 11 3/8" x 3 high. These will be used to build up the wall cabinets and create space for the doors to open. Secure these directly to the bottom of the two 15" wide x 42" high wall cabinets, lining up the edges with the back of the cabinets.

Step 4: Take one of the 30" wide x 15" high wall cabinets, and secure it between the two 15" wide x 42" high wall cabinets. Using shims for the back, secure the face frames together and the sides of the cabinets.

Step 5: Install the three cabinet unit on the countertop. Secure the unit to the wall.

Step 6: Take the two remaining 30" wide x 15" high wall cabinets and secure them to the wall, each other, and the cabinets below.

Step 7: Take the two base end panels and cut them in half 12" wide, to cover up the sides of the wall cabinets and the framing. Start from the countertop and working your way up (this will only cover up 36" of the wall cabinets), covering both sides of the 42" high wall cabinets. Take the two 30" wall end panels, and cut them to length to cover up the rest of the exposed wall cabinets.

Step 8: Take the wine bottle rack and secure it to the stem glass holder.

Step 9: Using the 1 x 2 lumber, cut small strips to use as support for the stem glass holder/wine bottle rack. Use the pint of stain to match the finish on the nailing strips to the cabinets. The wine rack unit can be installed at varying heights, just make sure the nailing strips are level before securing everything together.

Step 10: Take the toe kick and cut it to length to cover the front of the base cabinets.

Step 11: Using the valance, cut it two 15" long pieces to cover up the framing under the 15" wide x 42" high wall cabinets. Stain the ends of the valance to match the wall cabinets. This should finish off the wall cabinets.

Step 12: (Optional) Install crown molding if needed.

My Design Notes