

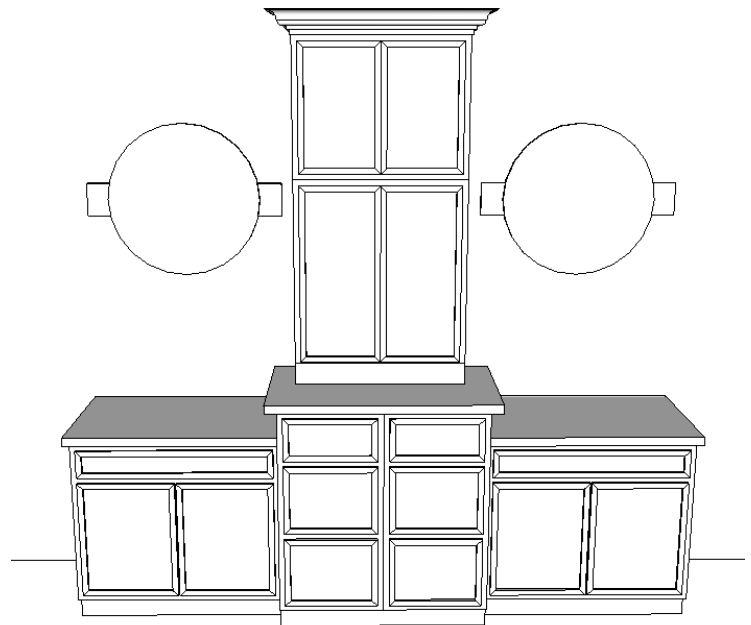
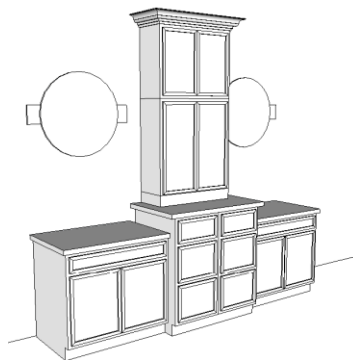


DOUBLE SINK STAGGERED HEIGHT BATHROOM

This is probably our most popular design from all of the TV shows that we have worked on. We get emails every week asking how to make this. This design lends itself to the Cherryville line, because the bathroom vanities are only 30" high rather than our standard of 32.5", but you can still accomplish the same look in any of our lines that feature both a vanity line and kitchen line. This design provides his and her sinks, and a lot of storage with the vertical tower.

Supplies You Will Need from the RTA Cabinet Store

- ✓ Two 18" drawer bases from the kitchen line
- ✓ Two 24" or two 30" vanities (depending on the amount of space you have)
- ✓ One 30" wide x 30" high wall cabinet
- ✓ One 30" wide x 24" high wall cabinet
- ✓ One piece of crown molding
- ✓ Four 42" filler strips (two of them are optional, and only needed if you are creating the mirrors)
- ✓ Two 2 x 4's from your local supply store



Instructions to Build Double Sink Staggered Height Bathroom

Step 1: Start by installing the center 18" drawer base cabinet, and the two vanities.

Step 2: Once countertops are installed, build a platform for the wall cabinets using the 2x4's. The frame should be 30" wide x 11 1/4" deep to match the bottom of the wall cabinets. (If you are using another style of cabinet, the filler strip may be a different thickness. For other fillers, the depth of the frame may be 11 7/16".) The platform should be two layers stacked, so that it comes out to 3" high.

Step 3: Install the two wall cabinets on top of the platform, anchoring them to the wall and the platform.

Step 4: Using two of the filler strips, trim out the 2x4 platform. Make sure you miter the corners so that the edges look finished.

Step 5: Install the crown moulding around the top.

Step 6: (Optional) Using the remaining two filler strips, attach them to the wall and add a mirror over it to complete the look in the picture.

My Design Notes