

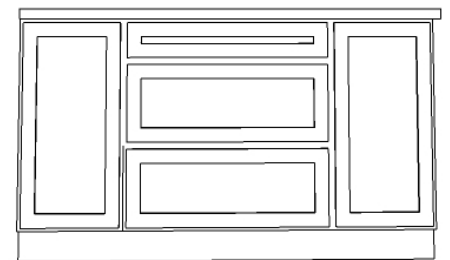
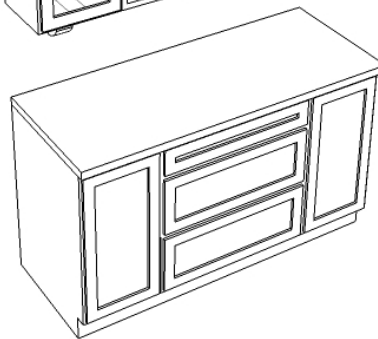
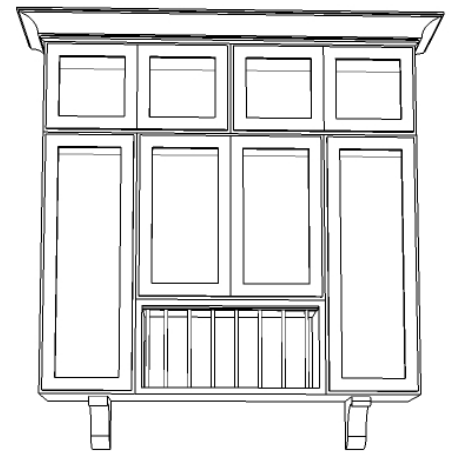
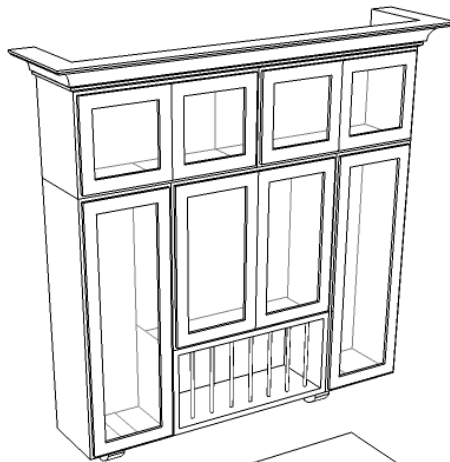


DISPLAY HUTCH WITH PLATE RACK

This design is great for homeowners that want to showcase their fine china or dishware. The combination of mullion doors, with the plate rack, and extra storage about makes a great focal point for a room (especially if you have tall ceilings). We made some modifications to make it work with our cabinet sizes, but you will still get the same dramatic effect. Add the LED lighting that we offer from www.ledundercounterlight.com and it would light up the whole room!

Supplies You Will Need from the RTA Cabinet Store

- ✓ Two 15" wide x 42" high wall cabinets
- ✓ Two 15" high x 30" wide wall cabinets (this can vary depending on the height of your ceilings)
- ✓ One 30" wide x 24" high wall cabinet
- ✓ One 30" wide plate rack
- ✓ One 30" wall filler
- ✓ Two 15" wide x 42" high mullion doors
- ✓ Two pieces of light rail molding
- ✓ One 30" wide 3 drawer base cabinet
- ✓ Two 15" wide base cabinets
- ✓ One piece of Toe Kick
- ✓ One piece of crown molding
- ✓ Pint of matching stain
- ✓ Optional: LED Lighting from <http://www.ledundercounterlight.com>
- ✓ Optional: Decorative Corbels



Instructions to Build a Display Hutch with Plate Rack

- Step 1: Starting with one side of the wall cabinets, install a 15” wide x 42” high wall cabinet. It is important to measure down from the ceiling to make sure that you leave enough room for the upper wall cabinets and crown.
- Step 2: Take the plate rack and 30” wide x 24” high wall cabinet and secure them together before mounting to the wall. Secure the two cabinets to the adjacent wall cabinet but securing them at the face frame. You can either secure the cabinets level with the bottom of the cabinets, or you can mount it level with the top of the cabinet. Either way you mount it, you will be using a filler strip to fill in the gap.
- Step 3: Mount the other 15” wide x 42” high wall cabinet and secure it to the face frame of the adjacent wall cabinets.
- Step 4: Using the filler strip, secure it in the 3” gap left from the center cabinets (either at the top or bottom).
- Step 5: Sticking with the wall cabinets, secure the two 30” wide x 15” high wall cabinets, and mount them above the wall cabinets. These should be secured to each other and to the cabinets below by securing the face frames.
- Step 6: Install crown molding and light rail molding, cutting to size. Make sure you use mitered cuts for a professional, finished look.
- Step 7: Install the base cabinets, securing them together at the face frame, ensuring they line up with the cabinets above.
- Step 8: Cut the toe kick to length and install at the bottom of the base cabinets.
- Step 9: Remove the doors from the two 15” wide x 42” high wall cabinets, and install the mullion doors.
- Step 10: Finish off the design with LED lighting and/or the optional decorative corbels.
- Step 11: Touch up with stain.

My Design Notes