

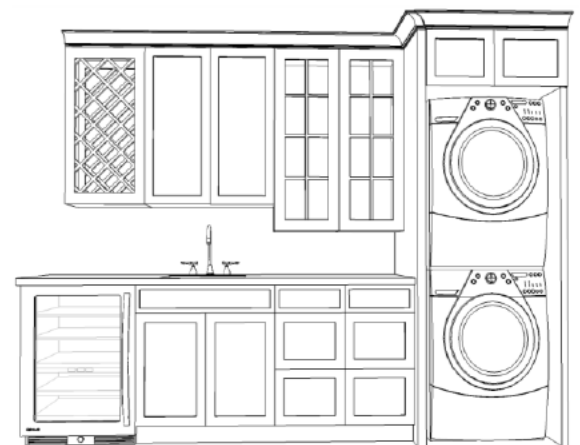
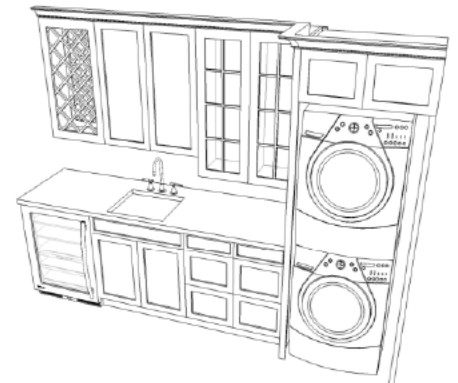
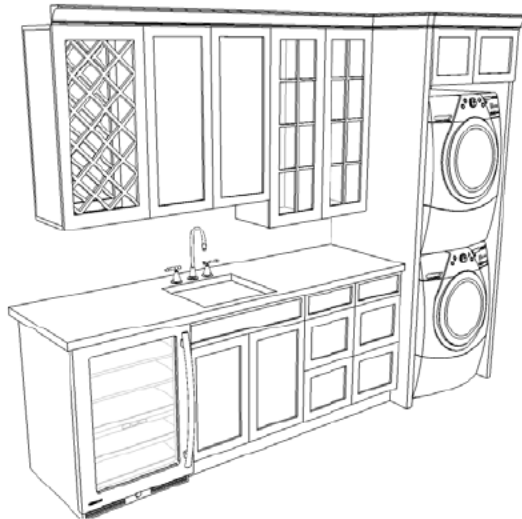


WASHER/DRYER WET BAR COMBO

This washer/dryer combo design is for the multi-functional room or small apartment. This design incorporates a wet bar, stack washer/dryer, mini refrigerator or wine cooler, and plenty of storage for all of your party or laundry supplies.

Supplies You Will Need from the RTA Cabinet Store

- ✓ Two 84" refrigerator panels
- ✓ One 24 wide x 15" high (height and width may vary based on the size of your washer/dryer stack)
- ✓ One 30" x 15" wine rack
- ✓ One 30" wide x 30" high wall cabinet
- ✓ One 30" wide x 42" (like the sketch) or 30" high wall cabinet
- ✓ One 30" sink base cabinet
- ✓ One 30" wall end panel
- ✓ One 30" base cabinet
- ✓ One dishwasher end panel
- ✓ Two 8' pieces of crown molding
- ✓ (optional) mullion doors for cabinet next to refrigerator panel



Instructions to Build a Washer/Dryer Wet Bar Combo

- Step 1: Using the two refrigerator panels, and the wall cabinet for above the washer/dryer secure all three pieces together. Secure them at the face frame of the cabinet as well as in the sides. For extra stability, the one side will be secured to the base cabinets, but the other side could also be secured to the wall if need be.
- Step 2: Starting with the wall cabinet closest to the washer dryer stack, start installing the wall cabinets. Secure them to the wall, and to each other at the face frame. For the wine rack, this can be installed on its side, so that the 30" are vertical.
- Step 3: Attach the wall end panel to the exposed side of the wine rack.
- Step 4: Once the wall cabinets are installed, secure the base cabinets to the wall, to each other, and to the refrigerator panel next to the washer/dryer stack.
- Step 5: Secure the dishwasher end panel to the wall and to the countertop. For extra stability consider securing the dishwasher end panel to the floor as well.
- Step 6: Install the optional mullion doors.

My Design Notes