

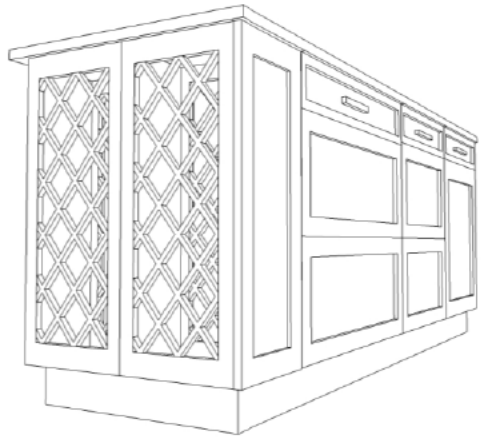
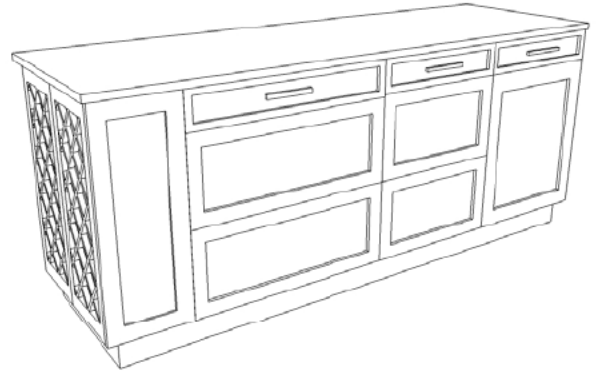


KITCHEN ISLAND WITH WINE RACK

While this is a fairly simple design, it helps to make the most out of the kitchen island without wasting space. In the drawing we incorporated two wine racks, but you could include a plate rack, shelving, or even leave one side open like they did in the picture. The sketch doesn't show it, but we backed up wall cabinets to the base cabinets on the other side, so you will actually need a filler in between the wine racks if you are doing two of them together.

Supplies You Will Need from the RTA Cabinet Store

- ✓ Two 30" x 15" wine racks
- ✓ Two 30" wall end panels
- ✓ Two 30" decorative wall end panels
- ✓ One island panel
- ✓ One 30" drawer base cabinet
- ✓ One 15" drawer base cabinet
- ✓ One 15" base cabinet
- ✓ Two 30" wide x 30" high wall cabinets
- ✓ 2 x 4's from your local supply store
- ✓ One 6" wide x 30" high wall filler



www.rtacabinetstore.com

P. 610-337-5934 F. 484-231-8726

Instructions to Build a Kitchen Island with Wine Rack

- Step 1: Start by installing the base cabinets, connecting them to each other and securing them to the floor.
- Step 2: Using 2x4's, build a frame to support the wall cabinets, and to make them look like base cabinets. The frame should be 60" long, by 8 3/8" deep, by 4.5" high. This will allow room for the toe kick, and give the feeling of base cabinets. Secure the framing to the back of the base cabinets and to the floor.
- Step 3: Take the two 30" wide wall cabinets and secure them to the framing, the back of the base cabinets and to each other at the face frame. The sides should line up perfectly with the base cabinets.
- Step 4: Build another frame using the 2x4's. This one should be 28 3/4" wide, 8 3/8" deep, and 4.5" high. Line the edge of the framing up with the edge of the framing that is under the two 30" wide wall cabinets to ensure proper placement. Secure this frame to both the framing next to it, and the floor.
- Step 5: Securing the wine racks together. It is easiest to secure them as one big unit before attaching them to the framing. So turn both wine racks on their side, so that they are 30" high and leave 6" of space for the filler strip. Secure the wine racks to the filler strip, then use 2 x4 blocks in the back to secure the wine racks tightly together.
- Step 6: Install the wine rack unit, securing it to the framing and the cabinets behind it.
- Step 7: Attach the regular wall end panels to the sides of the wine racks. This should bring the sides flush with the face frames of the base and wall cabinets.
- Step 8: Attach the decorative wall end panels over the regular end panels.
- Step 9: On the other end of the island, cut the island panel to size to cover up the sides of the base and wall cabinets, hiding the seam where they meet and bringing the sides flush with the face frames.

My Design Notes