

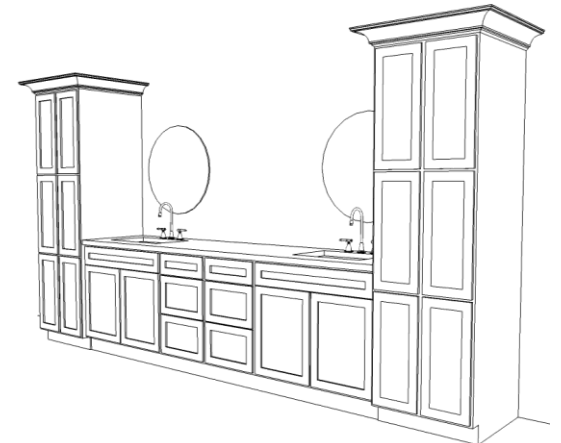
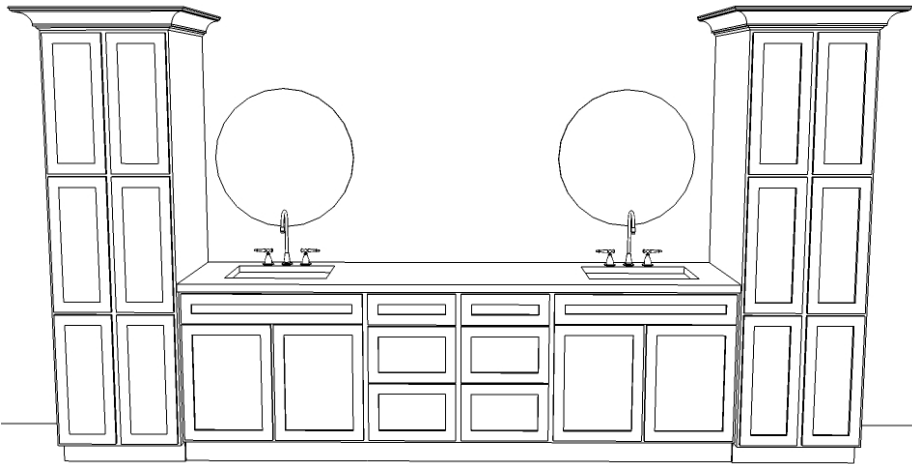
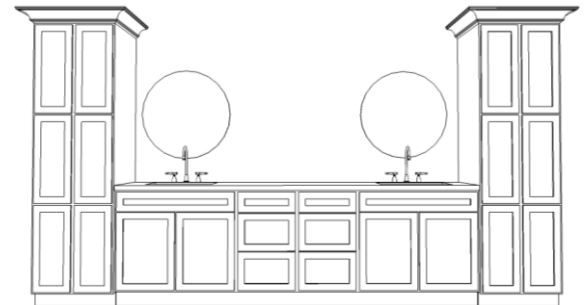
DOUBLE VANITY WITH LINEN CABINET

While this is a fairly simple design in terms of construction, it is another great way to lay out your bathroom and create a double vanity master bathroom suite. With flanking linen cabinets, two sinks and drawers in the middle, it creates ample storage and countertop space. With this design you have a lot of flexibility with the design, but may be limited on some of the styles that you can use. For the cabinet lines that don't have linen cabinets, you will have to use pantries (for our design we used pantries). While the image shows a white cabinet line, we used the autumn shaker to configure ours. (Note: Only a few of our bathroom lines have the three drawer cabinet for the middle.)



Supplies You Will Need from the RTA Cabinet Store

- ✓ Two 18" x 84" pantries
- ✓ Two 30" wide x 21" deep vanities
- ✓ Two 15" vanity drawer bank
- ✓ Two 8" lengths of crown molding
- ✓ Two 8" lengths of toe kick
- ✓ Pint of Matching stain



RTA
CABINET STORE

www.rtacabinetstore.com
P. 610-337-5934 F. 484-231-8726

Instructions to Build a Double Vanity with Linen Closet

- Step 1: In terms of installation, there really isn't anything out of the ordinary. Mark all of your measurements to ensure the plumbing lines up and start installing from side to the other. Secure the cabinets to the wall and to each other at the face frame. With the pantries being 24" deep, it will create a nice staggered depth look.
- Step 2: Cut the crown molding to length and install. Make sure you use a miter saw to get a professional look at the corners.
- Step 3: Using the toe kick, cut it to length to cover up the bottom of the cabinets and create a seamless look.
- Step 4: (Optional) In the picture they show the addition of corner cuts to give the illusion of feet on the bottom of the cabinets. This can be accomplished by adding furniture feet or by taking the left over toe kick and cutting out pieces to resemble feet.

My Design Notes