

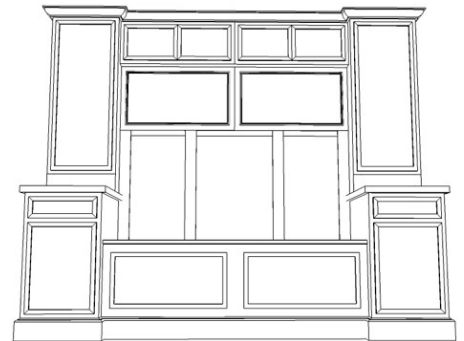
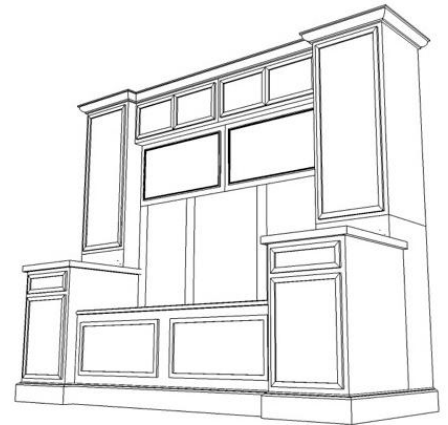
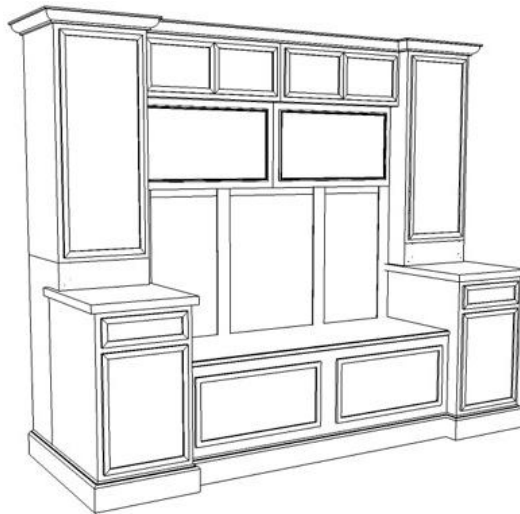


# COAT RACK WITH STORAGE

This is a great design for a mudroom or even the foyer of your home. With plenty of storage for coats, shoes, and all of the other items that seem to get scattered all over the house. This really shows the flexibility of our cabinets to be able to turn them into a piece of furniture. We made some modifications to the design to make it easy to incorporate our cabinets, but the overall look and feel still remain the same. So rather than buying a boring coat rack, build a custom coat rack and storage system for your home.

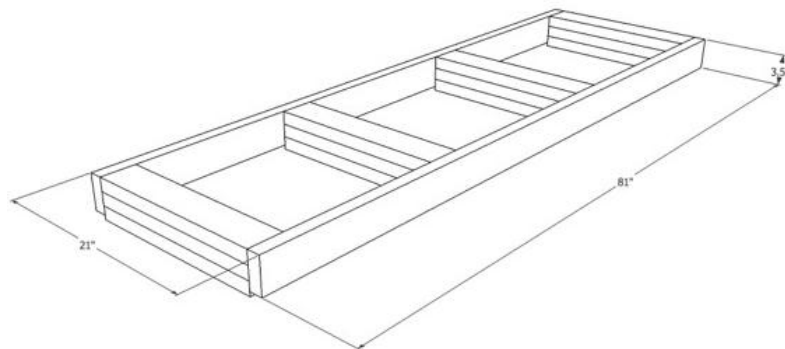
## Supplies You Will Need from the RTA Cabinet Store

- ✓ Two 21" base cabinets or 21" drawer base cabinets
- ✓ Two 21" wide x 42" high wall cabinets
- ✓ Two 33" wide x 15" high x 24" deep wall cabinets
- ✓ Two 33" wide x 15" high wall cabinets
- ✓ Three base end panels
- ✓ Seven pieces of 8' length toe kick
- ✓ Six island panels
- ✓ Two 42" wall end panels
- ✓ Two 6" wide x 30" long filler strips
- ✓ Pint of Stain
- ✓ (Optional) Four fluted column filler pieces)
- ✓ (Optional) Two mirrors (33" wide) or one long mirror (66" wide)
- ✓ 11-12 2x4's from your local home supply store

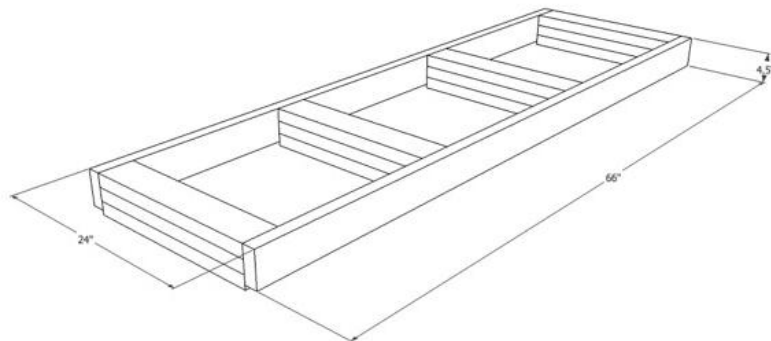


# Instructions to Build a Coat Rack with Storage

Step 1: To really create the staggered look from the design picture we have to build a frame to go behind the cabinets and bring the side/end cabinets out a couple of inches. Starting with the vertical cabinets, build two identical frames that are 3.5" deep, 20 3/4" wide, and 84" long. To do this, lay the 2x4's vertical rather than flat. (See drawing.)



Step 2: Before installing the cabinets, you need to create a frame for the seating area as well. For this, build a frame that is 4.5" high, 66" wide, and 24" deep. To achieve the height, lay the 2x4's flat and stack them 3 layers high.



Step 3: Measure in 24" from either side to determine where to anchor the framing for the seating area. Once located, anchor it to the wall and to the floor (if possible). Once installed, leave a 1/8" gap on each side and then line of the two vertical frames, securing them to the wall.

Step 4: Starting with the base cabinets, secure them to the vertical framing.

Step 5: Once installed, take 4 of the island panels, and cut them down to 34.5" high, but 27.5" wide (to cover up the four sides of the base cabinets). This should bring the sides of the cabinets flush with the face frame and cover up the framing in the back to create a seamless look on the sides.

Step 6: Once the base cabinets are installed, and the side panels are on, take the two double deep cabinets and install them on the seat framing (securing them to both the wall and the framing).

Step 7: Install counter tops and seat. In the design image, they show granite on the tops of the base cabinets and wood on the seating area. You can use any combination that you would like, but it is best to have it installed at this point before the wall cabinets and other finishing touches are added.

Step 8: Once the surfaces as installed, you have to build a frame for the wall cabinets. This frame will be 6" high, 20 3/4" wide, and 11 3/8" deep (leaving room for a filler piece to be mounted on the front to bring it flush with the face frame. Attach this frame directly to the framing on the wall.

Step 9: Install the two 42" wall cabinets on top of the 6" high framing, securing them to both the framing on the wall and the framing below it.

Step 10: Take the remaining two island panels, and cut them into four pieces that are 48" high x 15.5" wide. This will be secured to the sides of the wall cabinets and the framing, to cover up the frame and give it a finished look on the sides.

## Instructions to Build a Coat Rack with Storage Continued

Step 11: To cover up the 6" high framing on the front (just under the wall cabinet), cut the 6" filler strips to 21" long and secure to the front of the framing.

Step 12: Take the two remaining wall cabinets (33" wide x 15" high), and install them at the top, keeping them at the same level as the other wall cabinets. Secure them directly to the wall.

Step 13: Take the two 42" wall end panels and cut them down to 33" long. These will be installed on the underside of the two wall cabinets that you just installed, so that it is flush with the face frame.

Step 14: If you wanted to include the mirrors in the design, install the mirrors directly below the wall cabinets.

Step 15: For the back paneling, measure the remaining vertical space between the mirrors and the seat. Take the three base end panels and cut them to 22" wide, and the remaining height that is left in the space (for this example, we will assume the mirrors are 21" high which would leave 27" of space to cover).

Step 16: Take one piece of toe kick and cut it to 66" length, take two other pieces and cut four equal pieces that are 23" long (the 27" of remaining space minus 4" for the width of the horizontal piece that we will be installing).

Step 17: Attach the 23" pieces vertically to cover up the seams from the base end panels, and to create the appearance of wainscoting. Take the 66" piece and put that horizontally across the top of the trimmed pieces, which should line up with the bottom of the mirrors.

Step 18: Install crown molding.

Step 19: Install toe kick all the way around. To create flush look on the front of the base cabinets (as seen in the design picture), simply install 2x4 blocks in the front to attach the toe kick to. Make sure to use mitered cuts to create a custom look on the seams.

Step 20: (Optional) To add more detailing, you can install decorative fluted columns on the back rest. These can be attached directly to the vertical pieces of toe kick that were installed. Use the stain to match them to the finish of the cabinets before installing.

Step 21: Use the stain to touch up any exposed cuts.

## My Design Notes