

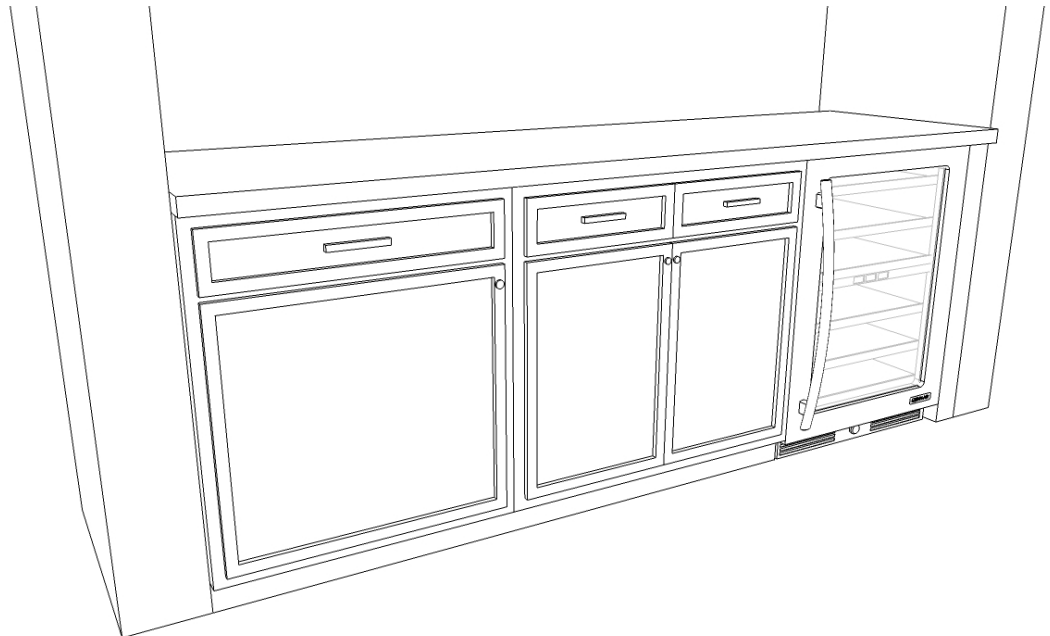


BASEMENT SNACK BAR

This is a simple design that would work in a basement entertainment area, workshop, kid's room, or as a kitchenette for a small apartment. Easy to create, and just as flexible for how many different configurations you could make. Think about adding a door mounted trash can to the base cabinets, or extra store for glasses with a wall insert. We really liked the use of down lighting and the tile backsplash to add some focus to this corner of the room.

Supplies You Will Need from the RTA Cabinet Store

- ✓ One dishwasher end panel
- ✓ Two 24" base cabinets
- ✓ Two 18" wide x 30" high wall cabinets
- ✓ One 36" wide x 15" high wall cabinet



Instructions to Build a Basement Snack Bar

- Step 1: Start with the installation of the wall cabinets, working from left to right, and securing the cabinets to both the back wall and the adjacent cabinet through the face frames.
- Step 2: Install your two base cabinets first.
- Step 3: Wire your refrigerator or wine cooler (whatever you plan to install). Once everything is connected properly, slide into place before installing the dishwasher end panel.
- Step 4: Install the dishwasher end panel, securing it to the adjacent wall. If you are installing this with an exposed side, you will have to build a brace in the back of the panel, as well as securing it to countertop you install.
- Step 5: Install countertop.

My Design Notes